

4

3

SH 1/3

REV F

WINDCHILL VERSION

F.4

1

NOTES:

- ALLOW SUFFICIENT ROOM ON ALL SIDES OF THE GENERATOR FOR MAINTENANCE & SERVICING. THIS UNIT MUST BE INSTALLED IN ACCORDANCE WITH CURRENT APPLICABLE NFPA 37 AND NFPA 70 STANDARDS AS WELL AS ANY OTHER FEDERAL, STATE, & LOCAL CODES. CONNECT THE OPEN SET EXHAUST PER NFPA 37.
- MUST ALLOW FREE FLOW OF INTAKE AIR, DISCHARGE AIR & EXHAUST GASES. SEE SPEC SHEET FOR MINIMUM AIR FLOW & MAXIMUM RESTRICTION REQUIREMENTS. (REF. 10000022699 SG625, 10000022751 MG625, 10000024335 SG750, 10000024341 MG750)
- GENERATOR SET MUST BE INSTALLED SUCH THAT FRESH COOLING AIR IS AVAILABLE & DISCHARGE AIR FROM THE RADIATOR IS NOT RECIRCULATED.
- CONTROL PANEL, (SHOWN WITH OPTIONAL BATTERY CHARGER).
- BATTERIES (4 BANK - 24 VOLT NEGATIVE GROUND SYSTEM).
- ENGINE SERVICE CONNECTIONS:
 - NATURAL GAS INLET = 2-1/2" FLEX HOSE CONNECTION (NOT SHOWN)
 - OIL DRAIN = 3/4" NPT FEMALE COUPLING
 - RADIATOR DRAIN = 3/4" NPT FEMALE COUPLING
 - FLEX PIPE OUTLET = DUAL 4" I.D. V-BAND CONNECTION
 - EXHAUST COLLECTOR OUTLET = SINGLE 6" I.D. ANSI FLANGE
 - CATALYST SILENCER OUTLET = 8" I.D. ANSI FLANGE
- ***** SEE GENERATOR SIZING GUIDE FOR FUEL PIPE SIZING TO SUIT APPLICATION *****
- 120V, 20A GFCI & 250V, 15A OUTLET (OPTIONAL).
- MAIN LINE CIRCUIT BREAKER (MLCB), AC LOAD LEADS. (DIMENSIONS MAY VARY DUE TO UNIT CONFIGURATION)
- CONNECTION POINTS FOR CONTROL WIRES PROVIDED IN THE LOW VOLTAGE CONNECTION BOX (SEE SHEET 2, LOW VOLTAGE STUB-UP AREA)
- AUXILIARY AC CONNECTION FOR UNIT OPTIONS ARE LOCATED IN HIGH VOLTAGE CONNECTION BOX, UNLESS AN OPTIONAL LOAD CENTER IS INSTALLED.
- EXHAUST BLANKETS SHOULD NOT COVER OXYGEN SENSOR.
- OXYGEN SENSOR MUST BE MOUNTED BETWEEN ENGINE OUTLET AND SILENCER INLET AS SHOWN.
- CATALYZED SILENCER (FOR EPA UNITS) MUST BE MOUNTED IN DESCRIBED POSITION, WITH PROPER SUPPORT STRUCTURE. FAILING TO FOLLOW THESE INSTRUCTIONS WHEN INSTALLING A CERTIFIED ENGINE IN A PIECE OF STATIONARY EQUIPMENT VIOLATES FEDERAL LAW 40 CFR 1068. 105(B), SUBJECT TO FINES OR PENALTIES AS DESCRIBED IN THE CLEAN AIR ACT.
- BOLTS OR STUDS USED TO MOUNT UNIT TO PAD SHALL BE 5/8"-11 GRADE 5. USE STANDARD SAE TORQUE SPECS.
- OPTIONAL LOAD CENTER AND BATTERY CHARGER SHIPS LOOSE FOR OPEN SET CONFIGURATIONS.
- CATALYST COOLING CHIMNEY MUST BE UNOBSTRUCTED. MINIMUM IFT CLEARANCE FROM TOP OF CHIMNEY TO ANY ITEM.

OXYGEN SENSOR LOCATION (NOTE 12)

2473 [97.3] EXHAUST OUTLET CENTERLINE

193 [7.6] DISCHARGE DUCT LENGTH

2801 [110.3] EXHAUST OUTLET HEIGHT

2631 [103.6] RADIATOR HEIGHT

1717 [67.6] RADIATOR DUCT OPEN AREA

333 [13.1] LIFTING EYE

143 [5.6] ISOLATOR MOUNTS

2501 [98.5] FUEL INLET (NOTE 6)

3495 [137.6] OVERALL LENGTH

4528 [178.3] OVERALL LENGTH

LIFTING EYE (EACH SIDE)

RIGHT SIDE VIEW

DRAWING CREATED FROM PRO/ENGINEER 3D FILE. ECO MODIFICATION TO BE APPLIED TO SOLID MODEL ONLY.

1778 [70.0] RADIATOR DUCT OPEN AREA

2098 [82.6] OVERALL WIDTH

FRONT VIEW

318 [12.5] RADIATOR CAP LOCATION

277 [10.9] RADIATOR CAP LOCATION

975 [38.4] EXHAUST OUTLET CENTERLINE

ALT AIR OUT

SECONDARY CIRCUIT BREAKER BOX (OPTIONAL)

251 [9.9]

1019 [40.1]

540 [21.2]

Ø 38 [1.5] 2 LIFTING LUGS

ALT AIR OUT

BLOCK HEATER (OPTIONAL)

RADIATOR DISCHARGE AIR

TOP VIEW

REAR VIEW

3604 [141.9] EXHAUST OVERALL HEIGHT

3236 [127.4] EXHAUST OUTLET CENTERLINE

828 [32.6]

2438 [96.0]

388 [15.3] LOW VOLTAGE CONNECTIONS

709 [27.9] HIGH & LOW VOLTAGE CONNECTIONS (NOTE 8)

1290 [50.8] CIRCUIT BREAKER HANDLE (NOTE 8)

CATALYST COOLING CHIMNEY (NOTE 16)

CATALYST SILENCER SHIPPED LOOSE (NOTE 13)

AIR CLEANERS

CONTROL PANEL (NOTE 4)

PRIMARY CIRCUIT BREAKER BOX (HIGH VOLTAGE CONNECTION)

RADIATOR DRAIN (NOTE 6)

OIL DRAIN (NOTE 6)

BLOCK HEATER (OPTIONAL)

LEFT SIDE VIEW

ALL DIMENSIONS ARE IN MILLIMETERS (INCHES)

INSTALLATION DRAWING

GENERAC POWER SYSTEMS OWNS THE COPYRIGHT OF THIS DRAWING WHICH IS SUPPLIED IN CONFIDENCE AND MUST NOT BE USED FOR ANY PURPOSE OTHER THAN FOR WHICH IT IS SUPPLIED WITHOUT THE EXPRESS WRITTEN CONSENT OF GENERAC POWER SYSTEMS. ©GENERAC POWER SYSTEMS 2013

ELECTRONICALLY APPROVED INSIDE WINDCHILL

GENERAC

TITLE

OPEN SET G33.9L G2
60Hz 3PH - SG625 MG625, SG750 MG750
50Hz 3PH - SG500 MG500, SG600 MG600

ISSUE DATE: 9/20/17

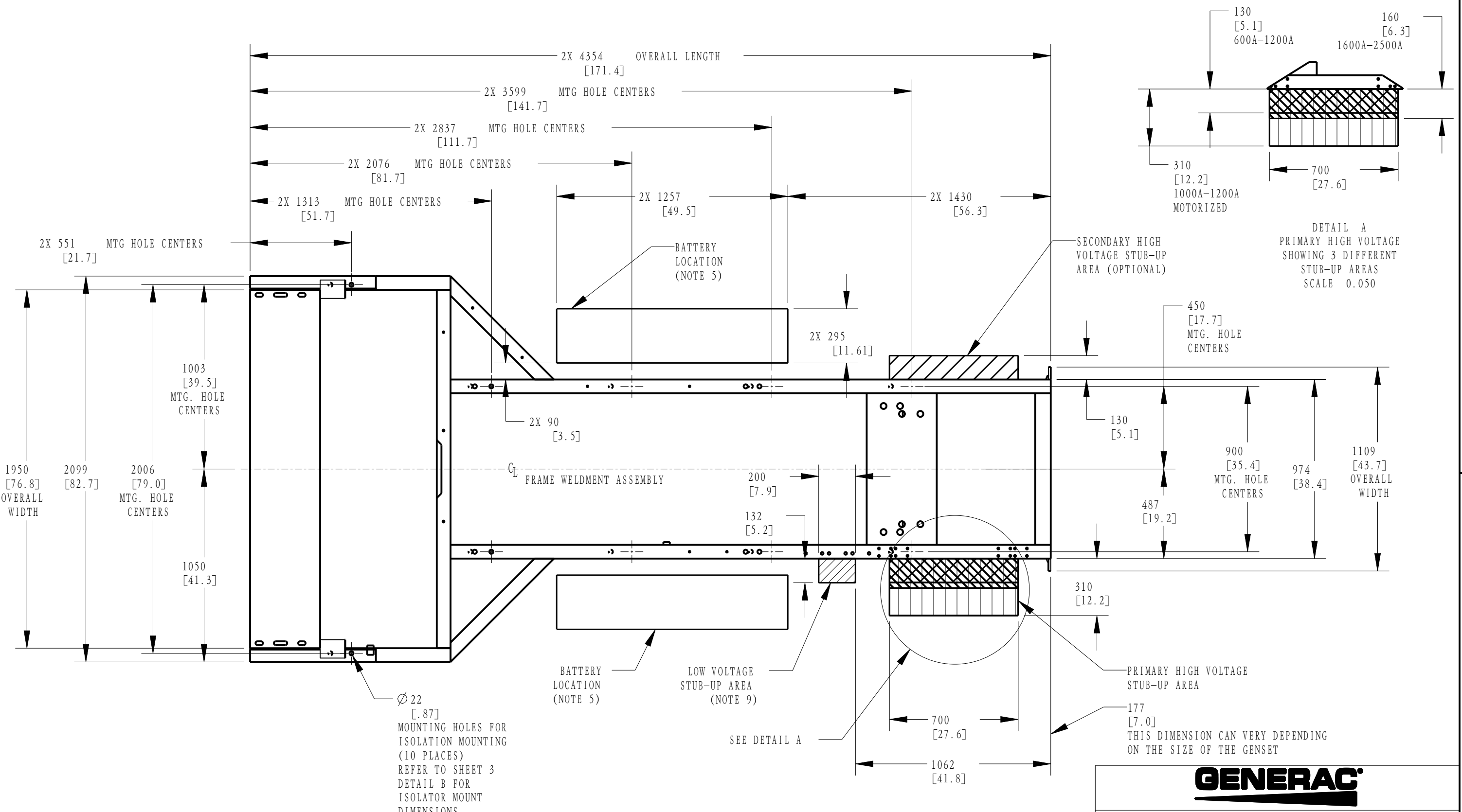
SIZE	CAGE NO	DWG NO	REV
B	N/A	10000021806	F
SCALE	WT-KG	SHEET	1 of 3
0.020	N/A		

B

B

A

A



DRAWING CREATED FROM PRO/ENGINEER 3D FILE. ECO MODIFICATION TO BE APPLIED TO SOLID MODEL ONLY.

ALL DIMENSIONS ARE IN MILLIMETERS (INCHES)

INSTALLATION DRAWING

GENERAC POWER SYSTEMS OWNS THE COPYRIGHT OF THIS DRAWING WHICH IS SUPPLIED IN CONFIDENCE AND MUST NOT BE USED FOR ANY PURPOSE OTHER THAN FOR WHICH IT IS SUPPLIED WITHOUT THE EXPRESS WRITTEN CONSENT OF GENERAC POWER SYSTEMS. ©GENERAC POWER SYSTEMS 2013

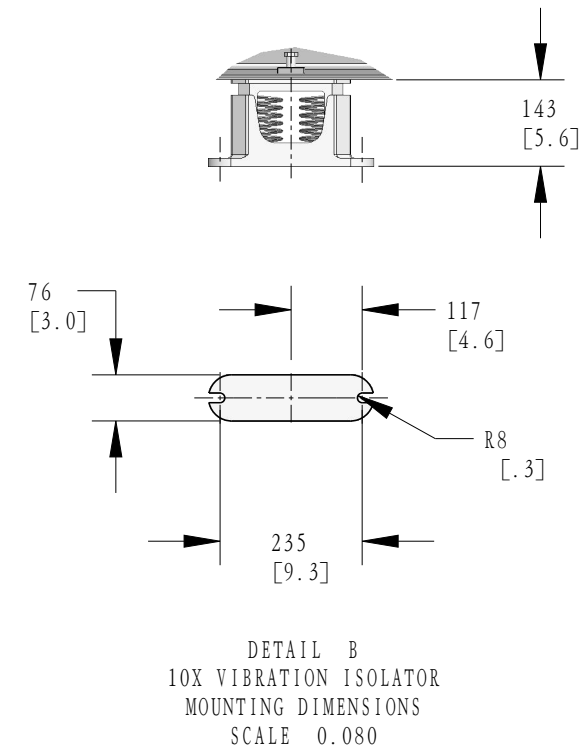
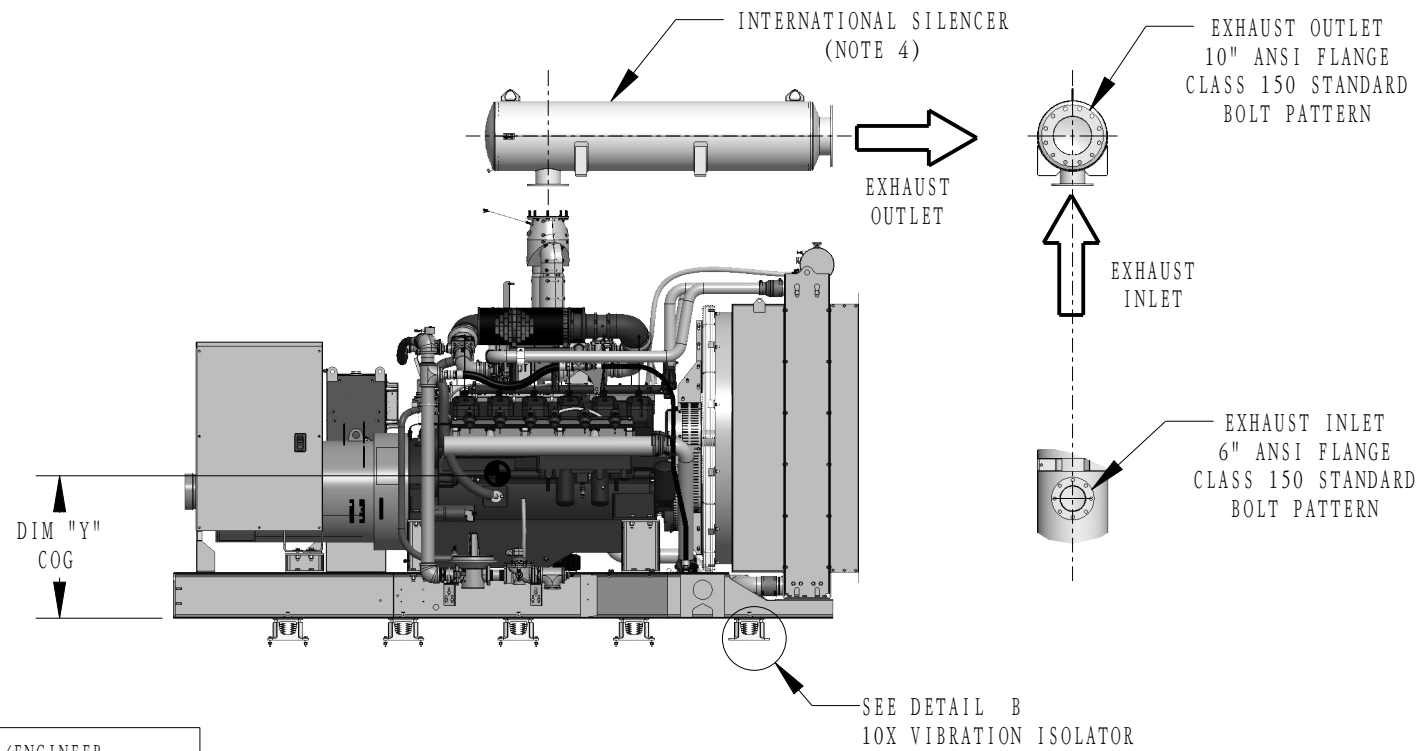
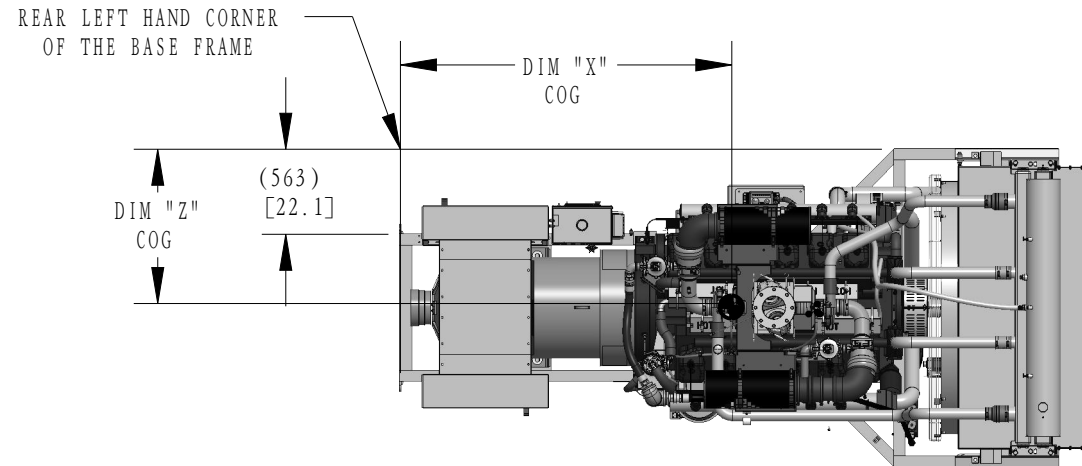
ELECTRONICALLY APPROVED
INSIDE WINDCHILL

GENERAC				
TITLE				
STUB-UP VIEW, OPEN SET G33.9L G2 60Hz 3PH - SG625 MG625, SG750 MG750 50Hz 3PH - SG500 MG500, SG600 MG600				
ISSUE DATE:		09/20/17		
SIZE	CAGE NO	DWG NO	REV	
B	N/A	10000021806	F	
SCALE	WT-KG	N/A	SHEET 2 of 3	
0.050				

OPEN SET

MODEL	ALTERNATOR	VOLTAGE	WEIGHT KG (LBS)	CENTER OF GRAVITY DIM "X"	CENTER OF GRAVITY DIM "Y"	CENTER OF GRAVITY DIM "Z"
SG/MG 625	STD	208/240	6571 (14486)	2465 (97")	1417 (55.8")	1163 (45.8")
SG/MG 625	UP SIZE 1	208/240	6724 (14824)	2424 (95.4")	1414 (55.7")	1163 (45.8")
SG/MG 625	UP SIZE 2	208/240	6773 (14932)	2413 (95")	1414 (55.7")	1163 (45.8")
SG/MG 625/500	STD	480/600/400 50Hz	6510 (14352)	2192 (86.3")	942 (37")	1070 (42.1")
SG/MG 625/500	UP SIZE 1	480/600/400 50Hz	6510 (14352)	2192 (86.3")	942 (37")	1070 (42.1")
SG/MG 625/500	UP SIZE 2	480/600/400 50Hz	6724 (14824)	2424 (95.4")	1414 (55.7")	1163 (45.8")
SG/MG 750	STD	208/240	6773 (14932)	2413 (95")	1414 (55.7")	1163 (45.8")
SG/MG 750	UP SIZE 1	208/240	7426 (16371)	2312 (91")	1405 (55.3")	1163 (45.8")
SG/MG 750	UP SIZE 2	208/240	7696 (16967)	2253 (88.7")	1402 (55.2")	1163 (45.8")
SG/MG 750/600	STD	480/600/400 50Hz	6724 (14824)	2424 (95.4")	1414 (55.7")	1163 (45.8")
SG/MG 750/600	UP SIZE 1	480/600/400 50Hz	6773 (14932)	2413 (95")	1414 (55.7")	1163 (45.8")
SG/MG 750/600	UP SIZE 2	480/600/400 50Hz	7426 (16371)	2312 (91")	1405 (55.3")	1163 (45.8")

- NOTE:
- 1) CENTER OF GRAVITY AND WEIGHT MAY CHANGE DUE TO UNIT OPTIONS. REFERENCE OWNERS MANUAL FOR LIFTING WARNINGS.
 - 2) ALL DIMENSIONS ORIGINATE FROM THE REAR, LEFT HAND CORNER OF THE BASE FRAME.
 - 3) WHEN OPTIONAL LOAD CENTER IS SELECTED WITH OPEN SET UNITS, LOAD CENTER SHIPS LOOSE. WHEN OPTIONAL LOAD CENTER IS SELECTED WITH ENCLOSED UNITS, LOAD CENTER IS ATTACHED TO ENCLOSURE.
 - 4) OVERALL WEIGHT OF UNIT WITH INTERNATIONAL SILENCER WILL BE REDUCED BY 57 KG (125 LBS). INTERNATIONAL SILENCER SHIPS LOOSE.



DRAWING CREATED FROM PRO/ENGINEER 3D FILE. ECO MODIFICATION TO BE APPLIED TO SOLID MODEL ONLY.

ALL DIMENSIONS ARE IN MILLIMETERS (INCHES)

INSTALLATION DRAWING

GENERAC POWER SYSTEMS OWNS THE COPYRIGHT OF THIS DRAWING WHICH IS SUPPLIED IN CONFIDENCE AND MUST NOT BE USED FOR ANY PURPOSE OTHER THAN FOR WHICH IT IS SUPPLIED WITHOUT THE EXPRESS WRITTEN CONSENT OF GENERAC POWER SYSTEMS.
©GENERAC POWER SYSTEMS 2013

ELECTRONICALLY APPROVED
INSIDE WINDCHILL



TITLE
WEIGHT & CENTER OF GRAVITY OPEN SET, G33.9L G2
60HZ 3PH - SG625 MG625, SG750 MG750
50Hz 3PH - SG500 MG500, SG600 MG600

ISSUE DATE:		09/20/17	
SIZE	CAGE NO	DWG NO	REV
B	N/A	10000021806	F
SCALE	WT-KG	N/A	SHEET 3 of 3
0.020			