

4

3

SH 1/3 REV D WINDCHILL VERSION D.3

1

NOTES:

1. ALLOW SUFFICIENT ROOM ON ALL SIDES OF THE GENERATOR FOR MAINTENANCE & SERVICING. THIS UNIT MUST BE INSTALLED IN ACCORDANCE WITH CURRENT APPLICABLE NFPA 37 AND NFPA 70 STANDARDS AS WELL AS ANY OTHER FEDERAL, STATE, & LOCAL CODES. CONNECT THE OPEN SET EXHAUST PER NFPA 37.
2. MUST ALLOW FREE FLOW OF INTAKE AIR, DISCHARGE AIR & EXHAUST GASES. SEE SPEC SHEET FOR MINIMUM AIR FLOW & MAXIMUM RESTRICTION REQUIREMENTS. (REF. 10000022699 SG625, 10000022751 MG625, 10000024335 SG750, 10000024341 MG750)
3. GENERATOR SET MUST BE INSTALLED SUCH THAT FRESH COOLING AIR IS AVAILABLE & DISCHARGE AIR FROM THE RADIATOR IS NOT RECIRCULATED.
4. CONTROL PANEL, (SHOWN WITH OPTIONAL BATTERY CHARGER).
5. BATTERIES (4 BANK - 24 VOLT NEGATIVE GROUND SYSTEM).
6. ENGINE SERVICE CONNECTIONS:
  - NATURAL GAS INLET = 2-1/2" FLEX HOSE CONNECTION (NOT SHOWN)
  - OIL DRAIN = 3/4" NPT FEMALE COUPLING
  - RADIATOR DRAIN = 3/4" NPT FEMALE COUPLING
  - FLEX PIPE OUTLET = DUAL 4" I.D. V-BAND CONNECTION
  - EXHAUST COLLECTOR OUTLET = SINGLE 6" I.D. ANSI FLANGE
  - MUFFLER CATALYST OUTLET = 8" I.D. ANSI FLANGE
7. 120V, 20A GFCI & 250V, 15A OUTLET (OPTIONAL).
8. MAIN LINE CIRCUIT BREAKER (MLCB), AC LOAD LEADS. (DIMENSIONS MAY VARY DUE TO UNIT CONFIGURATION)
9. CONNECTION POINTS FOR CONTROL WIRES PROVIDED IN THE LOW VOLTAGE CONNECTION BOX (SEE SHEET 2, LOW VOLTAGE STUB-UP AREA)
10. AUXILIARY AC CONNECTION FOR UNIT OPTIONS ARE LOCATED IN HIGH VOLTAGE CONNECTION BOX, UNLESS AN OPTIONAL LOAD CENTER IS INSTALLED.
11. EXHAUST BLANKETS SHOULD NOT COVER OXYGEN SENSOR.
12. OXYGEN SENSOR MUST BE MOUNTED BETWEEN ENGINE OUTLET AND SILENCER INLET AS SHOWN.
13. CATALYZED SILENCER (FOR EPA UNITS) MUST BE MOUNTED IN DESCRIBED POSITION, WITH PROPER SUPPORT STRUCTURE. FAILING TO FOLLOW THESE INSTRUCTIONS WHEN INSTALLING A CERTIFIED ENGINE IN A PIECE OF STATIONARY EQUIPMENT VIOLATES FEDERAL LAW 40 CFR 1068. 105(B), SUBJECT TO FINES OR PENALTIES AS DESCRIBED IN THE CLEAN AIR ACT.
14. BOLTS OR STUDS USED TO MOUNT UNIT TO PAD SHALL BE 5/8"-11 GRADE 5. USE STANDARD SAE TORQUE SPECS.

**TOP VIEW**

**REAR VIEW**

Labels: 318 [12.5] RADIATOR CAP LOCATION, 277 [10.9] RADIATOR CAP LOCATION, ALT AIR OUT, SECONDARY CIRCUIT BREAKER BOX (OPTIONAL), 251 [9.9], 1019 [40.1], 540 [21.2], Ø 38 [1.5] 2 LIFTING LUGS, 975 [38.4] EXHAUST OUTLET CENTERLINE, BLOCK HEATER (OPTIONAL), ALT AIR OUT, RADIATOR DISCHARGE AIR.

OXYGEN SENSOR LOCATION (NOTE 12)

**RIGHT SIDE VIEW**

Labels: 2473 [97.3] EXHAUST OUTLET CENTERLINE, 193 [7.6] DISCHARGE DUCT LENGTH, 1778 [70.0] RADIATOR DUCT OPEN AREA, 2801 [110.3] EXHAUST OUTLET HEIGHT, 2621 [103.2] RADIATOR HEIGHT, 1717 [67.6] RADIATOR DUCT OPEN AREA, 143 [5.6] ISOLATOR MOUNTS, 2501 [98.5], 3495 [137.6], 4528 [178.3] OVERALL LENGTH, 333 [13.1] LIFTING EYE, 2098 [82.6] OVERALL WIDTH, FUEL INLET (NOTE 6), LIFTING EYE (EACH SIDE).

**LEFT SIDE VIEW**

Labels: 3604 [141.9] EXHAUST OVERALL HEIGHT, 3236 [127.4] EXHAUST OUTLET CENTERLINE, 828 [32.6], 2438 [96.0], MUFFLER/CATALYST SHIPPED LOOSE (NOTE 13), AIR CLEANERS, BATTERY CHARGER (NOTE 4), CONTROL PANEL (NOTE 4), PRIMARY CIRCUIT BREAKER BOX (HIGH VOLTAGE CONNECTION), 703 [27.7] HIGH & LOW VOLTAGE CONNECTIONS (NOTE 8), 1290 [50.8] CIRCUIT BREAKER HANDLE (NOTE 8), RADIATOR DRAIN (NOTE 6), OIL DRAIN (NOTE 6), 388 [15.3], LOW VOLTAGE CONNECTIONS, LOAD CENTER (OPTIONAL).

DRAWING CREATED FROM PRO/ENGINEER 3D FILE. ECO MODIFICATION TO BE APPLIED TO SOLID MODEL ONLY.

RIGHT SIDE VIEW

ALL DIMENSIONS ARE REFERENCE

INSTALLATION DRAWING

GENERAC POWER SYSTEMS OWNS THE COPYRIGHT OF THIS DRAWING WHICH IS SUPPLIED IN CONFIDENCE AND MUST NOT BE USED FOR ANY PURPOSE OTHER THAN FOR WHICH IT IS SUPPLIED WITHOUT THE EXPRESS WRITTEN CONSENT OF GENERAC POWER SYSTEMS. ©GENERAC POWER SYSTEMS 2013

ELECTRONICALLY APPROVED INSIDE WINDCHILL

**GENERAC**

TITLE

OPEN SET  
G33.9LG2, 50/60HZ 3PH  
SG625 MG625, SG750 MG750

ISSUE DATE: 9/20/17

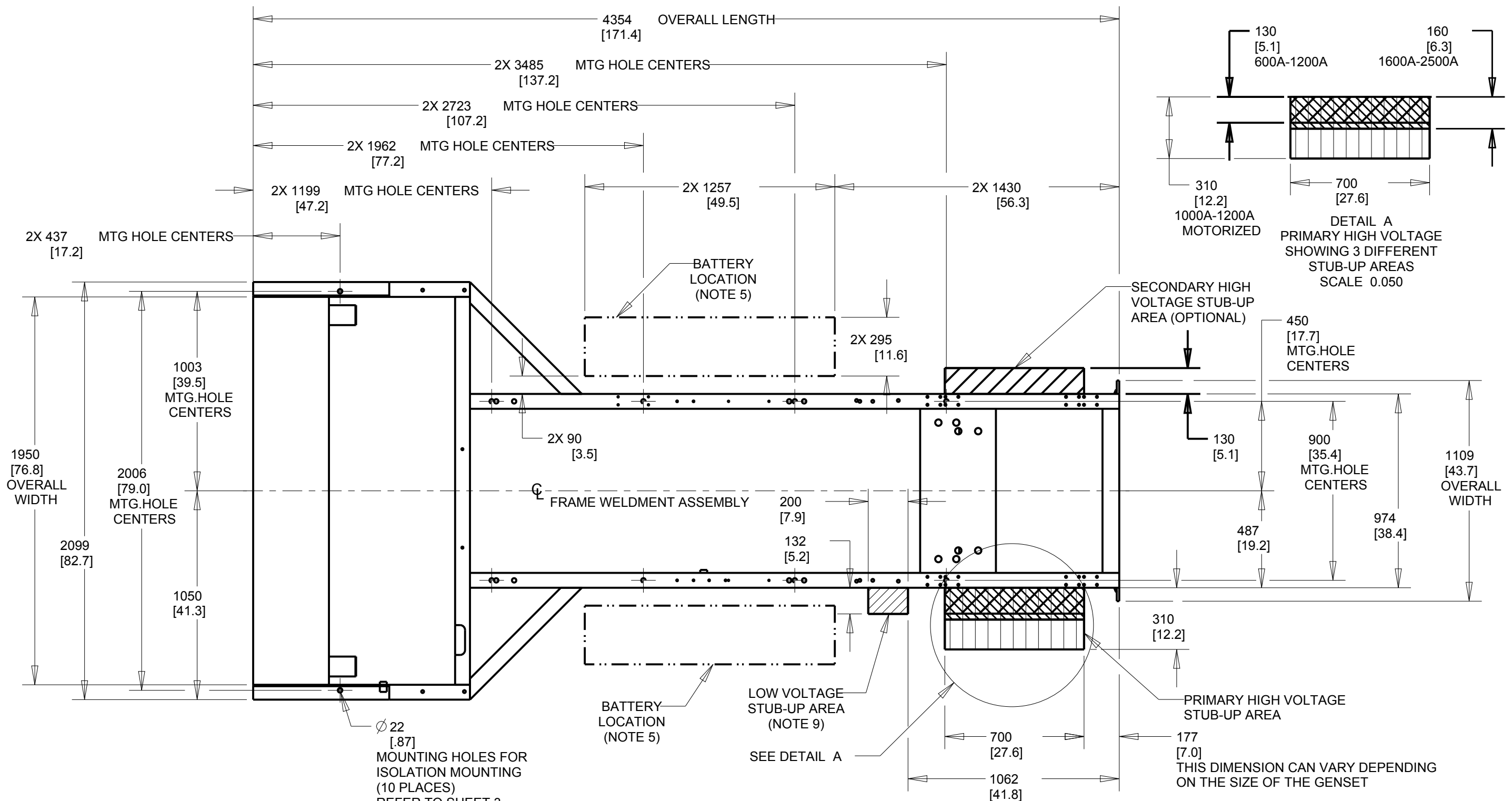
SIZE	CAGE NO	DWG NO	REV
B	N/A	10000021806	D
SCALE	WT-KG	SHEET	1 of 3
0.020	N/A		

B

B

A

A



DRAWING CREATED FROM PRO/ENGINEER 3D FILE. ECO MODIFICATION TO BE APPLIED TO SOLID MODEL ONLY.

ALL DIMENSIONS ARE REFERENCE

# INSTALLATION DRAWING

GENERAC POWER SYSTEMS OWNS THE COPYRIGHT OF THIS DRAWING WHICH IS SUPPLIED IN CONFIDENCE AND MUST NOT BE USED FOR ANY PURPOSE OTHER THAN FOR WHICH IT IS SUPPLIED WITHOUT THE EXPRESS WRITTEN CONSENT OF GENERAC POWER SYSTEMS. ©GENERAC POWER SYSTEMS 2013

ELECTRONICALLY APPROVED  
INSIDE WINDCHILL



TITLE			
STUB-UP VIEW, OPEN SET G33.9L G2, 50/60HZ 3PH SG625 MG625, SG750 MG750			
ISSUE DATE:		09/20/17	
SIZE	CAGE NO	DWG NO	REV
B	N/A	10000021806	D
SCALE	WT-KG	N/A	SHEET
0.050			2 of 3

4

3

SH

3/3

REV

D

WINDCHILL VERSION

D.3

1

OPEN SET

NOTE:

1) CENTER OF GRAVITY AND WEIGHT MAY CHANGE DUE TO UNIT OPTIONS. REFERENCE OWNERS MANUAL FOR LIFTING WARNINGS.  
 2) ALL DIMENSIONS ORIGINATE FROM THE REAR, LEFT HAND CORNER OF THE BASE FRAME.  
 3) WHEN OPTIONAL LOAD CENTER IS SELECTED WITH OPEN SET UNITS, LOAD CENTER SHIPS LOOSE. WHEN OPTIONAL LOAD CENTER IS SELECTED WITH ENCLOSED UNITS, LOAD CENTER IS ATTACHED TO ENCLOSURE.

MODEL	ALTERNATOR	VOLTAGE	WEIGHT KG (LBS)	CENTER OF GRAVITY DIM "X"	CENTER OF GRAVITY DIM "Y"	CENTER OF GRAVITY DIM "Z"
SG/MG 625	STD	208/240V	6571 (14486)	2465 (97")	1417 (55.8")	1163 (45.8")
SG/MG 625	UP SIZE 1	208/240V	6724 (14824)	2424 (95.4")	1414 (55.7")	1163 (45.8")
SG/MG 625	UP SIZE 2	208/240V	6773 (14932)	2413 (95")	1414 (55.7")	1163 (45.8")
SG/MG 625	STD	480/600V	6510 (14352)	2192 (86.3")	942 (37")	1070 (42.1")
SG/MG 625	UP SIZE 1	480/600V	6510 (14352)	2192 (86.3")	942 (37")	1070 (42.1")
SG/MG 625	UP SIZE 2	480/600V	6724 (14824)	2424 (95.4")	1414 (55.7")	1163 (45.8")
SG/MG 750	STD	208/240V	6773 (14932)	2413 (95")	1414 (55.7")	1163 (45.8")
SG/MG 750	UP SIZE 1	208/240V	7426 (16371)	2312 (91")	1405 (55.3")	1163 (45.8")
SG/MG 750	UP SIZE 2	208/240V	7696 (16967)	2253 (88.7")	1402 (55.2")	1163 (45.8")
SG/MG 750	STD	480/600V	6724 (14824)	2424 (95.4")	1414 (55.7")	1163 (45.8")
SG/MG 750	UP SIZE 1	480/600V	6773 (14932)	2413 (95")	1414 (55.7")	1163 (45.8")
SG/MG 750	UP SIZE 2	480/600V	7426 (16371)	2312 (91")	1405 (55.3")	1163 (45.8")

REAR LEFT HAND CORNER  
OF THE BASE FRAME

DETAIL B  
 10X VIBRATION ISOLATOR  
 MOUNTING DIMENSIONS  
 SCALE 0.080

DIM "Y"  
COG

SEE DETAIL B  
10X VIBRATION ISOLATOR

ALL DIMENSIONS ARE REFERENCE

DRAWING CREATED FROM PRO/ENGINEER  
3D FILE. ECO MODIFICATION TO BE  
APPLIED TO SOLID MODEL ONLY.

TITLE

WEIGHT & CENTER OF GRAVITY  
 OPEN SET, G33.9L G2, 50/60HZ 3PH  
 SG625 MG625, SG750 MG750

ISSUE DATE: 09/20/17

SIZE B	CAGE NO N/A	DWG NO 10000021806	REV D
-----------	----------------	-----------------------	----------

SCALE 0.020	WT-KG N/A	SHEET 3 of 3
----------------	--------------	-----------------

GENERAC POWER SYSTEMS OWNS THE COPYRIGHT OF THIS DRAWING  
 WHICH IS SUPPLIED IN CONFIDENCE AND MUST NOT BE USED FOR  
 ANY PURPOSE OTHER THAN FOR WHICH IT IS SUPPLIED WITHOUT  
 THE EXPRESS WRITTEN CONSENT OF GENERAC POWER SYSTEMS.  
 ©GENERAC POWER SYSTEMS 2013

ELECTRONICALLY APPROVED  
INSIDE WINDCHILL

INSTALLATION DRAWING

4

3

2

1