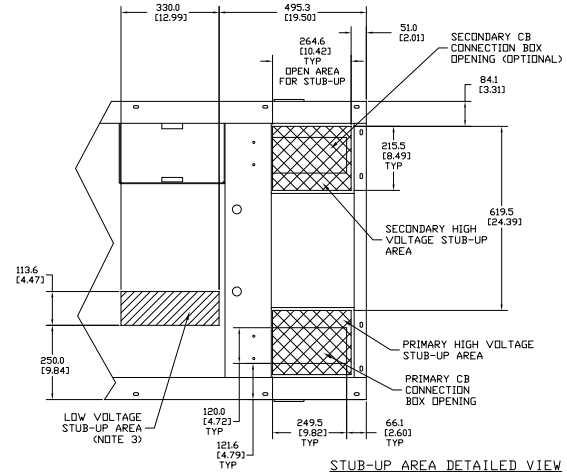
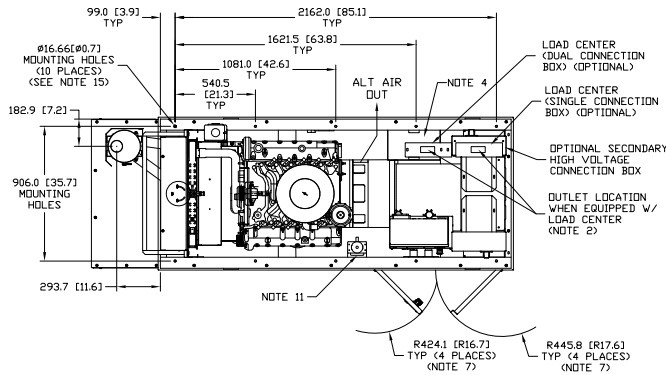


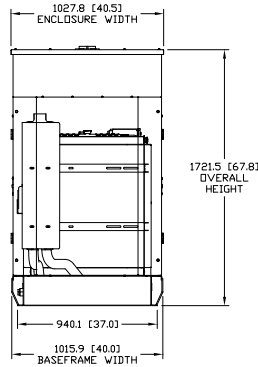
0J4198C



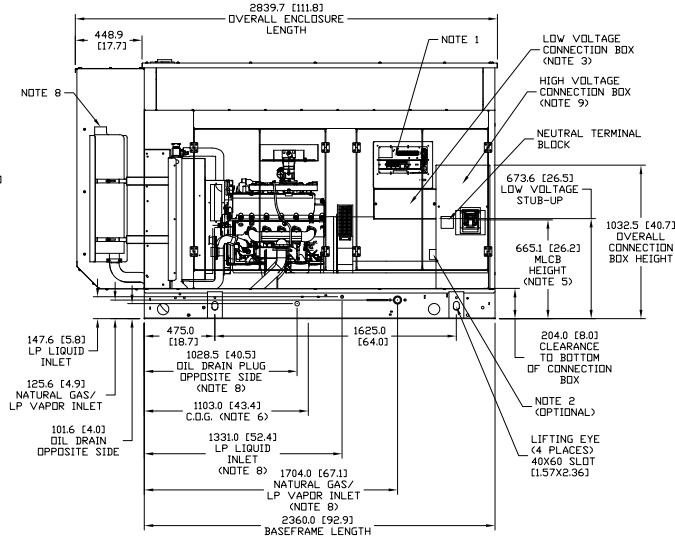
STUB-UP AREA DETAILED VIEW

NOTE:

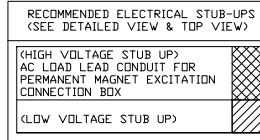
- CONTROL PANEL, (OPTIONAL BATTERY CHARGER INSIDE)
- 120V, 20A GFI & 250V, 15A OUTLET (OPTIONAL)
- CONNECTION POINTS FOR CONTROL WIRES PROVIDED IN THE LOW VOLTAGE CONNECTION BOX (USE LOW VOLTAGE STUB UP AREA)
- BATTERY (SEE VOLT NEGATIVE GROUND SYSTEM)
- MAIN LINE CIRCUIT BREAKER (MLCB), AC LOAD LEADS CONNECT DIRECTLY TO MLCB. (MLCB HEIGHT MAY VARY WITH CB SELECTION)
- CENTER OF GRAVITY AND WEIGHT MAY SHIFT SLIGHTLY DUE TO UNIT OPTIONS
- DOORS MUST BE ABLE TO OPEN AT LEAST 90° TO BE REMOVED
- ENGINE SERVICE CONNECTIONS:
INLET L/P GAS = 1-1/4" NPT COUPLING
INLET LIQUID = 1/4" NPT COUPLING
INLET NATURAL GAS = 1-1/4" NPT COUPLING
OIL DRAIN = 1/2" NPT COUPLING
EXHAUST OUTLET = 3.0" I.D.
- AUXILIARY AC CONNECTION FOR UNIT OPTIONS ARE LOCATED IN HIGH VOLTAGE CONNECTION BOX, UNLESS AN OPTIONAL LOAD CENTER IS INSTALLED
- EPA AIR QUALITY REGULATIONS REQUIRE THE CATALYST TO REMAIN MOUNTED IN THE FACTORY INSTALLED POSITION OR WITHIN THE SPECIFIED MOUNTING POSITION DETAILED ON THIS DRAWING UNDER PENALTY OF FEDERAL LAW
- BLOCK HEATER
- BOTTOM OF GENERATOR SET MUST BE CLOSED TO PREVENT PEST INTRUSION AND RECIRCULATION OF DISCHARGE AIR AND/OR IMPROPER COOLING AIR FLOW.
- GENERATOR SET MUST BE INSTALLED SUCH THAT DISCHARGE AIR IS NOT RECIRCULATED.
- CIRCUIT BREAKER
-AC LEAD LEADS CONNECT DIRECTLY TO BOTTOM OF BREAKER.
-REFER TO LUG SIZING CHART AVAILABLE ON GEN-CONNECT.
- MOUNTING BOLTS OR STUDS TO MOUNT UNIT TO CONCRETE PAD SHALL BE 3/8-11 GRADE 5. (USE STANDARD SAC TORQUE SPECS)



REAR VIEW



LEFT SIDE VIEW



WEIGHT DATA

OPEN SET: 875KG [1929LBS]
STEEL ENCLOSURE: 400KG [882LBS]
ALUMINUM ENCLOSURE: 132KG [291LBS] (SEE NOTE 6)

GENERAC POWER SYSTEMS OWNS THE COPYRIGHT OF THIS DRAWING WHICH IS SUPPLIED IN CONFIDENCE AND MUST NOT BE USED FOR ANY PURPOSE OTHER THAN FOR WHICH IT IS SUPPLIED WITHOUT THE EXPRESS WRITTEN CONSENT OF GENERAC POWER SYSTEMS.

© GENERAC POWER SYSTEMS 2001

SG50, SG60, & SG70
6.8 LITER DIRECT DRIVE

NATURALLY ASPIRATED

LEVEL 2 ACOUSTIC ENCLOSURE

ISSUE DATE 2/19/11

GENERAC POWER SYSTEMS
Waukesha
P.O. BOX 8
WAUKESHA, WIS. 53187

FILE NAME	0J4198C.DWG		SIZE	B
SCALE	NTS	FIRST USE	6.8L	G3
DWG NO.	0J4198C			REV
				E

INSTALLATION DRAWING